

10VA DC-to-AC Inverter

TI10

Manufactured by Mid-Continent Instrument Co., Inc.

The TI10 provides reliable 400 Hz AC power in a small, lightweight, highly-capable package.



Standing just 1.5 inches tall, the TI10 DC-to-AC Inverter is a small, lightweight inverter designed to provide a reliable source of 26-volt, 400 Hz AC power. The voltage and frequency of its pure sine wave output remains stable regardless of input fluctuations.

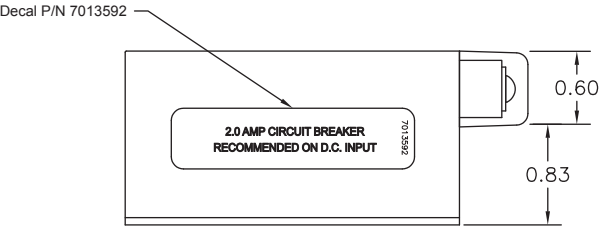
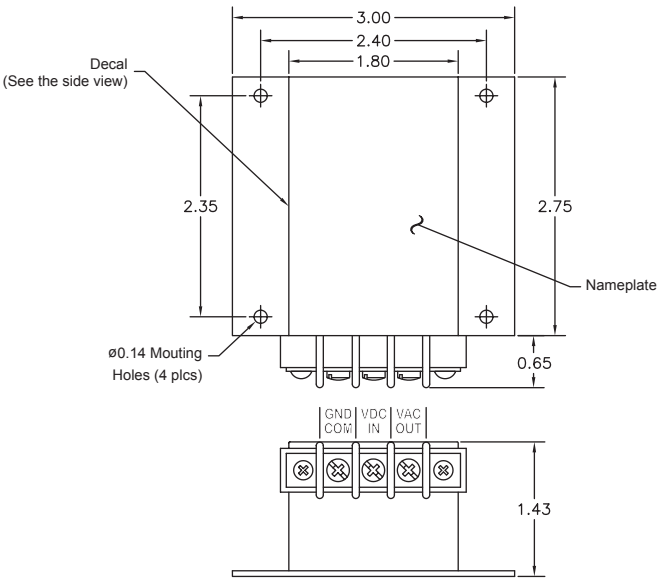
Product features

OUTPUT POWER	10 VA
INPUT VOLTAGE	11 – 40 VDC
OUTPUT VOLTAGE	26 VAC, 400 Hz
PROTECTION	Transient and reverse polarity protected
TYPICAL APPLICATIONS	Provides reference and/or power for bootstrap synchros, weather radar systems, GAD 42, GAD 43 and others
DESIGNED AND MANUFACTURED	Wichita, Kansas, USA
WARRANTY	Two-year limited

10VA DC-to-AC Inverter

TI10

Manufactured by Mid-Continent Instrument Co., Inc.



Technical specifications

INPUT VOLTAGE	11 – 40 VDC
INPUT CURRENT	1.8A max
OUTPUT VOLTAGE	26 ± 1 VAC, 400 Hz ± 0.5%, single phase
OUTPUT POWER	10 VA Pure sine wave, < 3% distortion
WEIGHT	0.28 lbs
ALTITUDE	-1,000 to +50,000 ft
HUMIDITY	0 to 95% at 25 °C
TEMPERATURE	-55 °C to +70 °C
DIMENSIONS	1.5" H x 2.8" L x 3.0" W (approximate)
RF EMISSIONS	RTCA DO-160F, Section 21, Category M
VIBRATION	.02 in. dbl. ampl., 3g @ 5 to 55 Hz
CONNECTOR	Terminal block
CERTIFICATION	FAA PMA approved